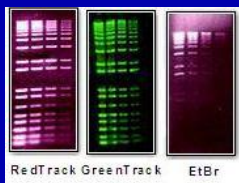


RedTrack™ and GreenTrack™ Precast Agarose Gels

Goodbye Ethidium Bromide!



Biomoles' new generation RedTrack™ and GreenTrack™ Precast Gels use newly developed staining substances to provide superior imaging without touching the mutagen ethidium bromide or unstable SYBR green. The resulting images are remarkably sharp and clear bands; responsive to minimal amount of DNA; uncover small fragments; and very clean background. The products are safer for the scientists and easier to handle. RedTrack Gels can be used with any standard UV transilluminator. GreenTrack Gels can be used with SYBR reader, short wave UV transiluminator and laser based gel reader.

Introduction

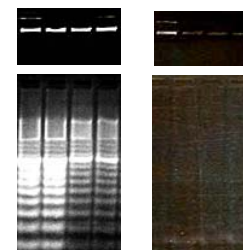
Both Gels are delivered in our UV transparent SureTrack tray. The SureTrack tray has specially designed walls that protect the gels during transport and storage but can be easily removed to provide direct gel-to-buffer contact in any standard electrophoresis device. The ultra-clear and UV transparent trays allow for convenient repeating observations of DNA/RNA mobility and high quality imaging without ever having to touch the gel. The Gels can remain in the tray throughout the entire electrophoresis process. The results are faster analysis times, consistent results, and optimal imaging.

Competitive Advantages

- Safer to Use
 - Does not contain Ethidium Bromide
 - According to Ames test, RedTrack™ and GreenTrack™ stains showed undetectable mutagenicity and toxicity with the concentration used in RedTrack™ & GreenTrack Precast Gels.
 - Four sided tray keeps everything clean
- Yields High Quality Results
 - Significantly sharper bands than using ethidium bromide
 - Very clean background
 - Ultra-clear tray material
 - High resolution DNA/RNA bands
- Highly Sensitive
 - About 10 times higher sensitivity to DNA/RNA
 - Requires minimal amount DNA: as little as 5ng per lane
- Easy, Convenient, Saves Time
 - Easy to plan your experiments
 - Easy observation and imaging
 - High level of consistency
 - Simple access for DNA recovery
 - DNA/RNA bands can be observed within 15 minutes
- Provides Consistent Results
 - Undetectable DNase and RNase
 - Consistent gel concentration
 - Eliminate gel handling related contamination and Damage.
 - Avoids problems with SYBR green temperature stability.
- Universal Application
 - No special equipment required, fits into standard electrophoresis chambers
 - Available in a variety of well formats and agarose concentrations
 - No need to change the filters: RedTrack™ Precast Gels can be analyzed under standard UV transiluminator or SYBR reader; GreenTrack™ Precast gels can be analyzed under SYBR reader, 254nm UV transiluminator or 488nm laser based gel reader.



3% RedTrack 50bp DNA Ladder
Per lane: 20 ng-5ng



3% RedTrack 3% EB Gel
20bp DNA Ladder. Per Lane: 20ng-5ng

Specifications

- Six available concentrations: 0.8%, 1.0%, 1.5%, 2.0%, 3.0% and 4.0%
- Trays fit standard gels boxes. Sizes are: 10.0x9.0 cm¹ and 6.0x12.0 cm² (LxW³).
- Actual gels sizes are 10.0x7.0 and 6.0x10.0 cm (LxW)
- Storage: 8 months 4-25° C

Agarose Concentration	Recommended Fragment Size	Functional Size Range	Gel Running Time
0.8 %	4,000bp-15,000bp	300bp-15,000bp	20-45 min
1.0 %	3,500bp-5,000bp	100bp-10,000bp	15-30 min
1.5 %	2,000bp-3,500bp	70bp-10,000bp	15-25 min
2.0 %	1,000bp-2,000bp	50bp-4000bp	15-25 min
3.0 %	500bp-1,000bp	50bp-1500bp	15-30 min
4.0 %	10bp-500bp	10bp-1000bp	10-25 min

Catalog No. for Precast Agarose Gels

Concentration	Well Format		Gel Dimensions	Product No.	Additional Coding For Catalogue No.	
	No. Wells	No. Row x Wells/Row			Buffer	Coding
% Agarose			LxW			
0.8%	8	1x8	10x7	08-08-107	RedTrack	RT
0.8%	14	1x14	6x10	08-14-610	GreenTrack	GT
0.8%	16	2x8	10x7	08-16-107		
1.0%	8	1x8	10x7	10-08-107		
1.0%	14	1x14	6x10	10-14-610		
1.0%	16	2x8	10x7	10-16-107	Package Size	
1.5%	8	1x8	10x7	15-08-107	20 Units	20
1.5%	14	14	6x10	15-14-610	30 Units	30
1.5%	16	2x8	10x7	15-16-107		
2.0%	8	1x8	10x7	20-08-107		
2.0%	14	1x14	6x10	20-14-610		
2.0%	16	2x8	10x7	20-16-107		
3.0%	8	1x8	10x7	30-08-107		
3.0%	14	1x14	6x10	30-14-610		
3.0%	16	2x8	10x7	30-16-107		
4.0%	8	1x8	10x7	40-08-107		
4.0%	14	1x14	6x10	40-14-610		
4.0%	16	2x8	10x7	40-16-107		

Catalogue No. = Product No. + "Buffer Type" + "Package Size"

**e.g. 08-14-107RT20
15-14-610GT30**

Buffers and Loading Dyes

Catalog No.	Product	Unit	Concentration
BTA-10M1	TAE Buffer 10x	1000 ml	10
BTA-50M1	TAE Buffer 50x	1000 ml	50
BTB-10M1	TBE Buffer 10x	1000 ml	10
BTE-05M1	TBE Buffer 5x	1000 ml	5
RDNA-6M1	Red/Orange DNA Loading Dye; Red, Green Tracks	1ml	6X
RDNA-6M5	Red/Orange DNA Loading Dye; Red, Green Tracks	5ml	6X

Where To Order

Phone: +1.206.812.1524
 Fax: +1.206.545.2897
 Email: sales@biomoles.com

¹ For standard small gel box

² For standard medium or large gel boxes

³ This refers to size after removal of tray banks. With banks trays are 12.0x9.0 and 8.0x12.0cm.